

This impressive application shows the way forward,
not only for visual education, but for all learning.

Professor Emeritus Richard Hickman, Faculty of Education, Cambridge University

molly's world

An introduction by Professor Richard Weston • Director, Molly's World CIC



Molly's World is an online resource for children, consisting of a creative app and personal learning website. Together, they encourage an optimistic vision of the future by:

- celebrating children's creativity;
- communicating the diversity of nature and human cultures;
- encouraging a global outlook; and
- countering the negative impacts of 'big tech'.

Molly's World will be an immensely valuable resource, not only for creativity but also for conservation. It encourages collaboration in a safe, constructive environment and promotes a sense that we're all in this together. It's sure to be a great resource for children everywhere.

Professor Joshua Dale, Chuo University, Tokyo



Celebrating creativity

The iPad **MollyApp** offers children a unique combination of Photoshop-like tools, mineral 'digital paints' and graphic resources to draw, colour, make montages and patterns, and create animated scenes and stories. It is undergoing a second round of testing in schools, after being re-coded in Apple's Swift language. It will be ready for launch in July 2024 and, through links to the Prodigy network and specialist wallpaper, fabric and ceramic tile printers, will enable children to transform their bedrooms and create a wide range of everyday goods for themselves, family and friends.





Celebrating biodiversity

We will be organising a series of projects about threatened eco-systems, with an emphasis on celebration of their beauty, not predictions of doom. These begin with wild-flower meadows, and for our official launch we will be presenting a ‘meadow scarf’ like this to HM The Queen, using children’s drawings made in the beautiful meadow at Highgrove created by HM The King before his accession to the Crown.



Molly’s Meadow



Pole to Pole



Molly’s Coral Reef



Molly by the Sea



Molly in the Desert



Discovering cultural diversity

Thanks to the donation of an extensive material and literary archive about native American Indian cultures, these will be our initial focus.

This will involve content on the website – pow wows, costumes, stories and poems, etc. – and practical projects using the MollyApp, such as the creation of patterns. Molly's Tepee forms part of our Roadshow for schools and pop-up shop in St David's mall, outlined below.



Native American Indians



Aboriginal Australians



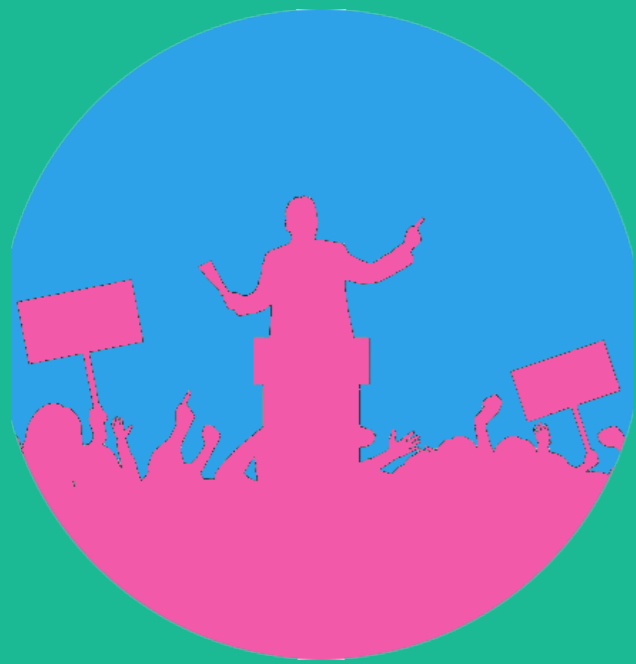
Inuit



Peruvian



Native Hawaiians



Campaigning for the future

Young children represent the world in the same way, regardless of culture, so their art-work offers a uniquely affecting way to encourage awareness of environmental and social challenges. With parents' permission, we will harness this potential.



We can't save the world by playing by the rules,
because the rules have to be changed.

Greta Thunberg



Encouraging global awareness

Thanks to the power of its Content Management System, and the coding of the MollyApp, **Molly's World** offers hitherto unimaginable ways of encouraging creative collaboration, and promoting and co-ordinating global networks:

- all files are stored in layers and can be modified at any time;
- files can be exchanged instantaneously with someone in the same room, or on the other side of the world, who can contribute collaboratively;
- work produced on iPads using the MollyApp is stored on our server and available to send to digital manufacturers or used in campaigns: the server is secure, and parents will be required to agree to this in our Terms and Conditions; and
- For children, families and schools these capabilities offer genuinely social ways of interacting, encouraging inter-generational exchanges (using the adult CreateForAll app) and enabling sustainable international networks to develop.

I am an educator who thinks globally.

Paulo Freire